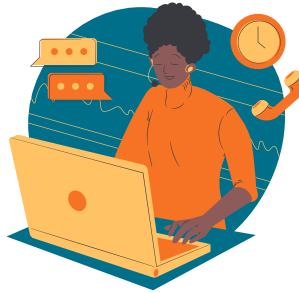


BCM FOLLOW-UP

How do you grow your group through relational and intentional follow-up?
Use the progression steps below to connect new contacts to your BCM group.

MAKE A CONNECTION

1



Connect with your contact within 2-3 days from initial contact.

- Make a call or send a text/DM
- Ask good questions to begin to know more about them.
- Setup another time to connect with one another.

GROW TRUST & BUILD FAMILIARITY

2



Spend time getting to know one another by frequently reaching out.

- Check-in to offer prayer or a word of encouragement.
- Have a meal or do an activity (i.e. study, work out, etc.)
- Converse by asking questions & getting to know each other.

INTRODUCE THEM TO COMMUNITY

3



Invite them to an InterVarsity gathering, outreach, or Bible Study

- Share about InterVarsity & what you enjoy about it.
- Make an invitation for them to join you & follow-up.
- Connect after the InterVarsity meet-up and debrief their experience.